



OPERATING INSTRUCTIONS

for heat press

Secabo TMUG

Congratulations on purchasing a Secabo heat press!

Please read these operating instructions carefully to ensure that you can start production with your machine without problems.

Reproduction of these operating instructions in any form requires written approval by Nepata Vertrieb GmbH. We reserve all rights to modify the technical data and product features without prior notice. We cannot assume any liability for printing errors.

Nepata Vertrieb GmbH does not assume any liability for direct or indirect damage resulting from use of this product.

Version 1.2 (30.06.2008)



Table of Contents

1	Safety Precautions	2
2	Scope of Delivery	3
3	Description of Machine	4
4	Operation	5
5	Maintenance and Cleaning.....	6
6	Recommended Times and Temperatures	7
7	Technical Data Secabo TMUG	8



1 Safety Precautions

Please read these instructions and safety precautions carefully before starting up your machine for the first time!

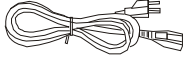
- Never reach into the heat press with your hands when it is connected to the power supply, particularly when it is switched on and heated up – danger of severe burns!
- Never open the housing or attempt to modify the machine yourself.
- Ensure that liquids and metal objects do not get into the inside of the heat press.
- Ensure that the power socket used is grounded. Note that it is only permissible to operate a heat press from a power socket protected by a ground fault protection switch.
- Disconnect the power plug if the machine is not to be used for a longer period of time.
- Never operate the heat press within the reach of children and never leave the machine unsupervised when switched on.
- Ensure that the machine is used only in dry rooms.

If you cannot observe one or more of the safety precautions above, or if you are not sure whether all points are satisfied, please contact our Technical Support Department.

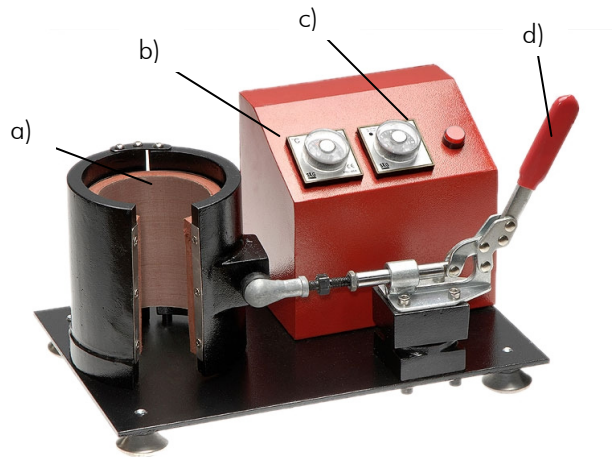


2 Scope of Delivery

Please check right at the beginning whether the following items have been delivered completely:

Item	Quantity	
heat press	1	
220V connecting cable	1	
operating instructions	1	

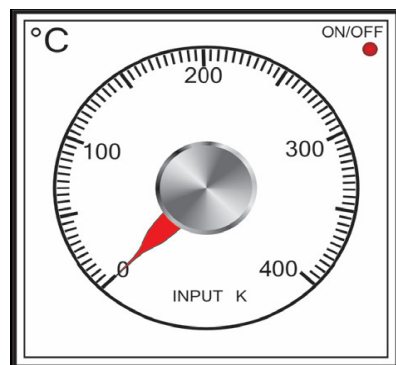
3 Description of Machine



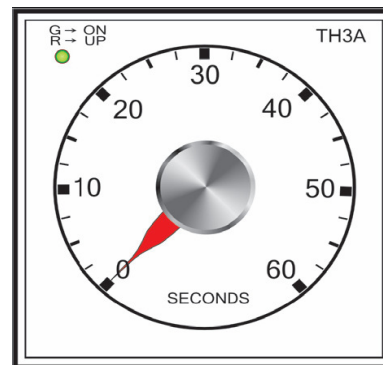
- a) Hot melt heater
- b) Temperature control knob
- c) Time control knob
- d) Press lever

4 Operation

- Connect the heat press to a 230 V power socket using the connection cable supplied.
- Switch on the press with the red rocker switch.
- After switching on the press heats up automatically to the set temperature, which can be changed at any time on the temperature control knob. A small light on the temperature control knob illuminates as long as the press is heating up.
- The contact pressure can be regulated by increasing or reducing the lever travel by rotating the knurled nut on the press lever.
- As soon as the press is heated up completely you can start making the first transfers. For this purpose select the desired pressing time on the time control knob. The timer starts running as soon as the press is closed with the press lever. After expiration of the set time a warning signal sounds.



Temperature control knob



Time control knob

Note: The heat press has to cool down after use, which can take some time.

Note: Please note that the heat press is not designed for continuous operation, so do not leave the press switched on when it is not in use.



5 Maintenance and Cleaning

Maintenance work should always be accomplished with the press switched off and cooled down. Disconnect the plug from the power socket before starting work.

Clean the press regularly with a soft cloth and mild household cleaner to remove adhesive residues, etc. Never use scouring sponges, solvents or gasoline!



6 Recommended Times and Temperatures

These values serve only as guidelines; they can vary from material to material and should always be checked before pressing.

Material	Temperature	Pressure	Time
Flock vinyl	170° C - 185°C	little - medium	25s
Flex vinyl	160°C - 170°C	medium- high	25s
Sublimation flex	180°C - 195°C	medium - high	10s - 35s
Sublimation on mugs	200°C	medium - high	150s - 180s
Sublimation on tiles	200°C	high	120s - 480s <small>(depends on gauge of the material)</small>
Sublimation on puzzles	200°C	little - medium	25s
Sublimation on mousepads	200°C	medium	20s - 40s
Sublimation on garments	200°C	medium - high	30s - 50s
Sublimation on metal panels	200°C	high	10s - 50s <small>(depends on gauge of the material)</small>



7 Technical Data Secabo TMUG

	TMUG
max. cup height	12,5cm
cup diameter	7,5-8,5cm
max. temperature	200°C
max. delay time	60s
operating voltage	230V / 500W
weight	9kg
Maße	35x35x22cm



NEPATA GM
V E R T R I E B

Nepata Vertrieb GmbH

www.secabo.com

Hochstatt 6-8

85283 Wolnzach

Germany