



## OPERATING INSTRUCTIONS

for heat press

**Secabo TCAP**

Congratulations on purchasing a Secabo heat press!

Please read these operating instructions carefully to ensure that you can start production with your machine without problems.

Reproduction of these operating instructions in any form requires written approval by Nepata Vertrieb GmbH. We reserve all rights to modify the technical data and product features without prior notice. We cannot assume any liability for printing errors.

Nepata Vertrieb GmbH does not assume any liability for direct or indirect damage resulting from use of this product.



## Inhaltsverzeichnis

1	Safety Precautions .....	2
2	Scope of Delivery .....	3
3	Description of Machine .....	4
4	Operation .....	5
5	Maintenance and Cleaning .....	6
6	Recommended Times and Temperatures.....	7
7	Technical Data.....	9



## 1 Safety Precautions

Please read these instructions and safety precautions carefully before starting up your machine for the first time!

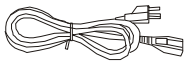
- Never reach into the heat press with your hands when it is connected to the power supply, particularly when it is switched on and heated up – danger of severe burns!
- Never open the housing or attempt to modify the machine yourself.
- Ensure that liquids and metal objects do not get into the inside of the heat press.
- Ensure that the power socket used is grounded. Note that it is only permissible to operate a heat press from a power socket protected by a ground fault protection switch.
- Disconnect the power plug if the machine is not to be used for a longer period of time.
- Never operate the heat press within the reach of children and never leave the machine unsupervised when switched on.
- Ensure that the machine is used only in dry rooms.

If you cannot observe one or more of the safety precautions above, or if you are not sure whether all points are satisfied, please contact our Technical Support Department.

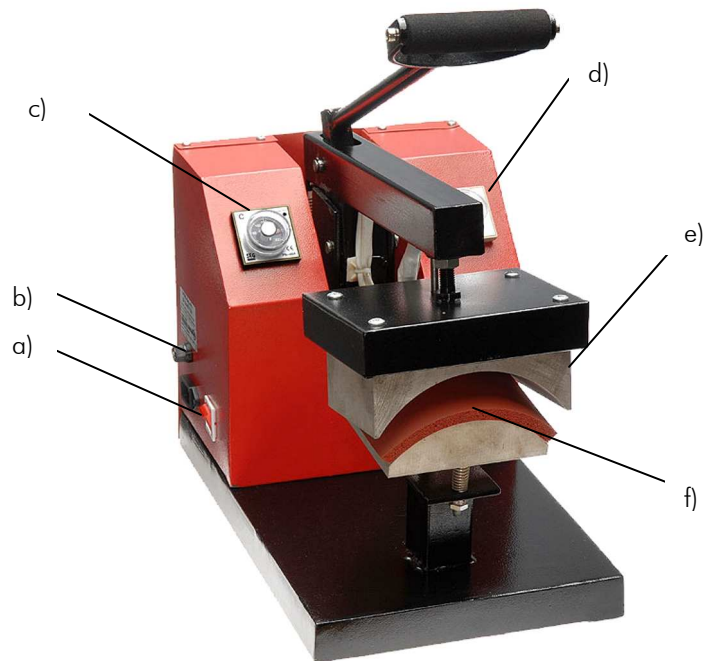


## 2 Scope of Delivery

Please check right at the beginning whether the following items have been delivered completely:

Item	Quantity	
heat press	1	
220V connecting cable	1	 A line drawing of a coiled power cable with a standard three-prong electrical plug on one end and a different connector on the other.
operating instructions	1	

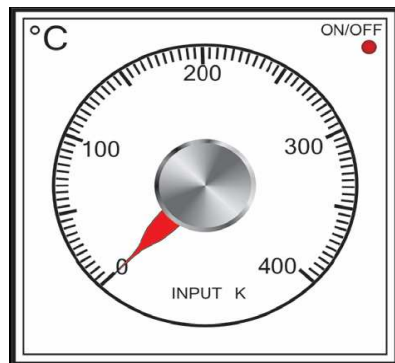
### 3 Description of Machine



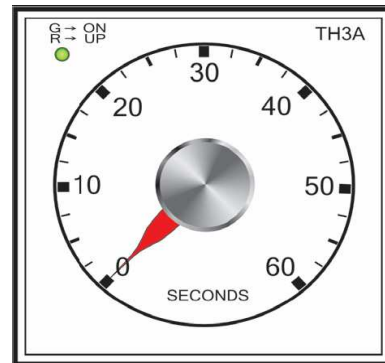
- a) Rocker switch
- b) Fuse
- c) Temperature control knob
- d) Time control knob
- e) Heat plate
- f) Working surface

## 4 Operation

- Connect the heat press to a 230 V power socket using the connection cable supplied.
- Switch on the press with the red rocker switch.
- After switching on the press heats up automatically to the set temperature, which can be changed at any time on the temperature control knob. A small light on the temperature control knob illuminates as long as the press is heating up.
- You can adjust the contact pressure by turning the large threaded ring below the pressing plate up (to increase the pressure) or down (to reduce the pressure). After adjusting the pressure it is necessary to arrest the lower pressing plate with the Allen screw located on the end below the threaded ring on the base of the press.
- As soon as the press is heated up completely you can start making the first transfers. For this purpose select the desired pressing time on the time control knob. The timer starts running as soon as the press is closed with the press lever. After expiration of the set time a warning signal sounds.



Temperature control knob



Time control knob

Note: Please note that it takes a certain amount of time until the press cools down again after being switched off.



## **5 Maintenance and Cleaning**

Maintenance work should always be accomplished with the press switched off and cooled down. Disconnect the plug from the power socket before starting work.

Clean the press regularly with a soft cloth and mild household cleaner to remove adhesive residues, etc. Never use scouring sponges, solvents or gasoline!



## 6 Recommended Times and Temperatures

These values serve only as guidelines; they can vary from material to material and should always be checked before pressing.

Material	Temperature	Pressure	Time
Flock vinyl	170° C - 185°C	little - medium	25s
Flex vinyl	160°C - 170°C	medium- high	25s
Sublimation flex	180°C - 195°C	medium - high	10s - 35s
Sublimation on mugs	200°C	medium - high	150s - 180s
Sublimation on tiles	200°C	high	120s - 480s <small>(depends on gauge of the material)</small>
Sublimation on puzzles	200°C	little - medium	25s
Sublimation on mousepads	200°C	medium	20s - 40s
Sublimation on garments	200°C	medium - high	30s - 50s
Sublimation on metal panels	200°C	high	10s - 50s <small>(depends on gauge of the material)</small>

**Note: After the pressing process the textiles must cool down before any carrier media can be taken off the transfer material.**

Only in the cold state can the hot-melt adhesive develop its adhesive force in the transfer material. If the adhesive does not stick in the cold state, it is possible that



the pressing may have been carried out at too low a temperature or for too short a time.



## 7 Technical Data

	TCAP
size of work plate	9cm x 15cm
swiveling radius	0°-30°
max. temperature	200°C
max. time setting	60s
operating voltage	230V / 1000W
weight	13kg
dimensions (open)	40x25x58cm



NEPATA   
V E R T R I E B

Nepata Vertrieb GmbH

[www.secabo.com](http://www.secabo.com)

Raiffeisenstr. 15a

85276 Pfaffenhofen a.d. Ilm

Germany